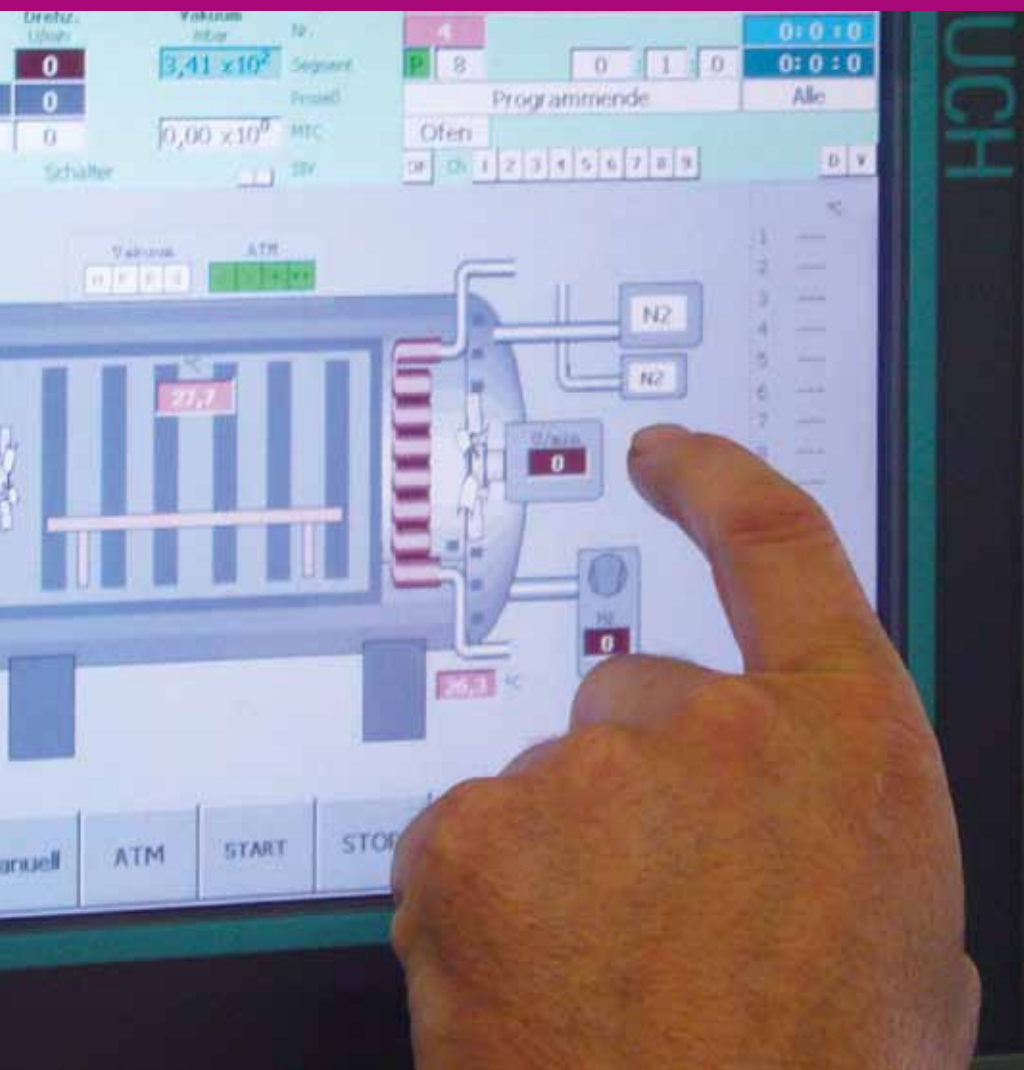
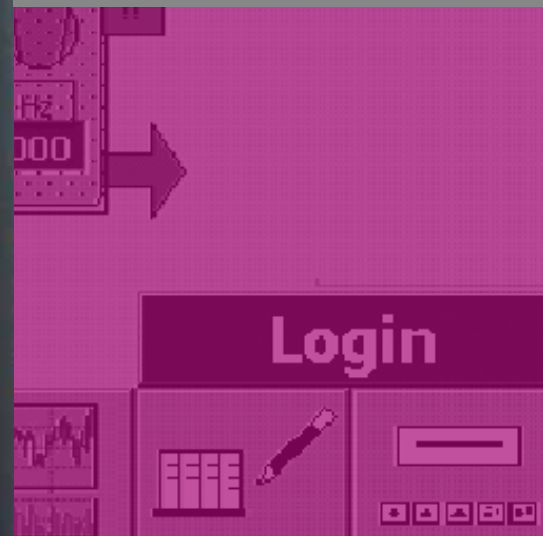


# SYSTHERMS



Software  
for heat  
treatment



## Touch panel software for furnace operation



### Our control concept: everything into the PLC

The programmable logic controller (PLC) is a widely recognised and proven industrial standard. The reliability and minimum downtimes are unrivalled. For this reason, we at SYSTHERMS have decided in favour of this technology since production of the first machine, i. e. the only active process participant is the PLC. The touch panel or the control system PC serve only as a user interface or data logger.

#### Advantages:

- High reliability of the system
- Central interface
- Long service lives of the components used
- Good availability of replacement parts



### Always on board: the touch panel

Users of SYSTHERMS furnaces always have a graphical user interface available to them: the touch panel.

This touch-sensitive screen with its many display and input options clearly informs the user at all times of the status of the furnace and the current process data. It also enables the user to create, manage and start heat treatment programs and to set a wide range of parameters.

Additional systems such as gas supply and cooling water recooling systems can also be controlled via the touch panel.

In the status area, the main process data are visible in all images, regardless of which sub-menu you are in. The details area displays comprehensive additional information on the various furnace parameters and peripheral systems.

#### Rapid achievement of objectives: Creation of heat treatment programs

Creation of heat treatment programs is child's play with the touch panel: Complete programs can be intuitively created, parameterised and started very quickly from prepared program modules. Program management is included. A monitoring routine checks the program. If no fault is detected, it can be loaded to the PLC and started.

### The control with the safety input

And if in doubt, just call us! We have access to your control and can support you at all times via remote diagnosis. In this way, software modifications and updates are also possible. Your furnace therefore remains productive for longer and downtimes are minimised.

### The Systherms alarm function

On request, we will equip your furnace with an alarm system which informs your operating personnel via SMS, e-mail or telephone of the status of the furnace during stand-by service.

Various alarm levels can be set. In addition, the duty rosters of your stand-by personnel are incorporated in the system.



## Features of the SYSTHERMS furnace control:

### Touch panel

- Image of furnace
- Creation of programs
- Execution of programs
- Setting of limit values
- Setting of controller parameters
- Setting of correction values after TUS and SAT measurement
- Service mode
- Plausibility check for programs
- Transfer of the programs to the PLC
- Limit of the electronic power consumption of the furnace (power management)
- Control and parameterisation of accessory systems (cooling water recooling, gas supply, ...)
- ...

### hestia control system:

- Saving program data
- Intelligent alarm aid
- Alarm statistics according to data or frequency
- Management of furnace loads
- Management of load photos
- Print-out of load reports
- Integration of other furnaces
- Interface capability to ERP systems
- Individual reporting
- ...



# hestia – the control system

## The **hestia** control system offers the ideal addition to the touch panel

The computer-aided software solves a wide range of additional tasks relating to heat treatment.

All heat treatment data are saved, loads are managed and logs are printed.

The convenient trend display with the universal zoom function allows individual values of the overview to be displayed and heat-up and cooling rates between two points to be calculated automatically.

In companies with more than one furnace, these can also be integrated into the system.

An interface to order management systems frequently used in hardening shops is already integrated into **hestia**.



## Maximum convenience in the trend graph

With **hestia** you can zoom at will in the trend graph and numerical values can be displayed at any one or two points with the data value tool. The change per time unit is calculated and displayed by **hestia**.

## Intelligent alarm aid in **hestia**

**hestia** helps you to immediately take the correct measures in the event of possible alarms. In the event of a fault, you can, if required, receive an exact description of the fault, a photo of the defective component and a list of the possible causes of the fault including an excerpt of the wiring diagram and a reference to the relevant page in the user's manual of the furnace.

The screenshot shows a 'Historische Prozesschargen' (Historical Process Charges) table. The table has columns for 'Nr.', 'Werkstoff', 'Start', 'Stop', 'Programmname', 'Programmdatei', 'Programmdauer', 'Status', and 'Kom. Status'. The table contains multiple rows of data, with some cells highlighted in red. The interface includes a menu bar at the top with options like 'Login', 'Logout', 'Planung', 'Programme', 'Chargen', 'System', 'Messen', 'Funktionen', 'Yasu', and 'Ende'. On the left side, there is a sidebar with icons for 'Anschicht', 'Tabelle', 'Programme', 'Chargen', 'Suchen', 'Drucken', 'Trendkurve', 'Gleichen Pro.', and 'Aktualisieren'.



**Everywhere online:  
Mobile access to *hestia***

Whether with your notebook PC or with an iPad: With *hestia* you can also always keep an eye on your data when you are travelling. The web-based architecture opens up undreamt-of possibilities for you and offers maximum flexibility.



**ERP integration with *hestia***

*hestia* can easily be integrated into existing ERP installations such as SAP and Oracle. From the ERP you therefore have direct access to your heat treatment data at serial number level – important for all industries in which complete traceability is required, such as the aerospace, automotive or medical technology industries.



Hestia Software by Systherms GmbH

[-: Quality Report :-](#)

**Allgemeine Informationen**

Chargennummer: WVC0912-1-2011-05-04  
 Start: 31.05.2011 13:47:07  
 Programme: FT370-001  
 Stop:

**Kommentare**

Datum/Uhrzeit	Benutzer	Kommentar
02.05.2011 11:38:52	Schmitt	Die Temperaturgenauigkeit ist sensationell
02.05.2011 11:39:07	Müller	Dieser Ofen kann alles
02.05.2011 17:47:01	Maier	Die Wärmebehandlung ist wie immer einwandfrei abgelaufen
02.05.2011 17:55:49	Maier	Alle Teile geprüft und in Ordnung

**ORData**

OR	OP	PN	SN	Bezeichnung
789654321	23459	778654321002	2011000000001	BMW X5 Get
789654322	23459	778654321003	2011000000003	BMW X3 Get
789654323	25866	778654321005	2011000000088	BMW X1 Inj
789654323	25866	778654321005	2011000000088	BMW X1 Inj

**The calling card for your customers: The load report**

On completion of the heat treatment, *hestia* helps you to create a professional report, which provides a clear overview of the main data when producing a professional report. You can therefore verify to the customer that the load has been treated in accordance with the specifications. All manual interventions in a previously saved heat treatment program made during runtime are automatically detected and documented.



SYSTHERMS GmbH  
Friedrich-Koenig-Str. 6  
97297 Waldbüttelbrunn  
Germany

Tel: +49 (0) 931 35 943-0  
Fax: +49 (0) 931 35 943-20

[info@systherms.de](mailto:info@systherms.de)  
[www.systherms.de](http://www.systherms.de)